

Addendum
January 12, 2007
1:00 pm

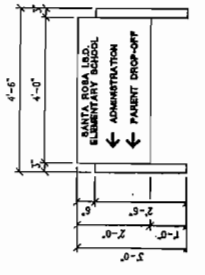
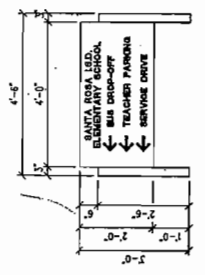
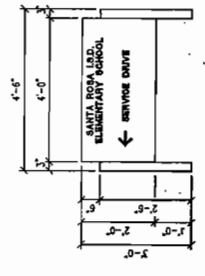
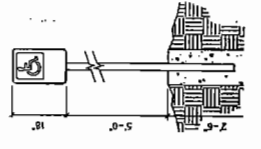
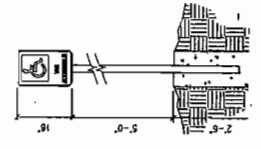
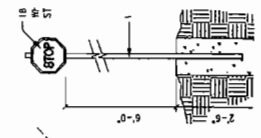
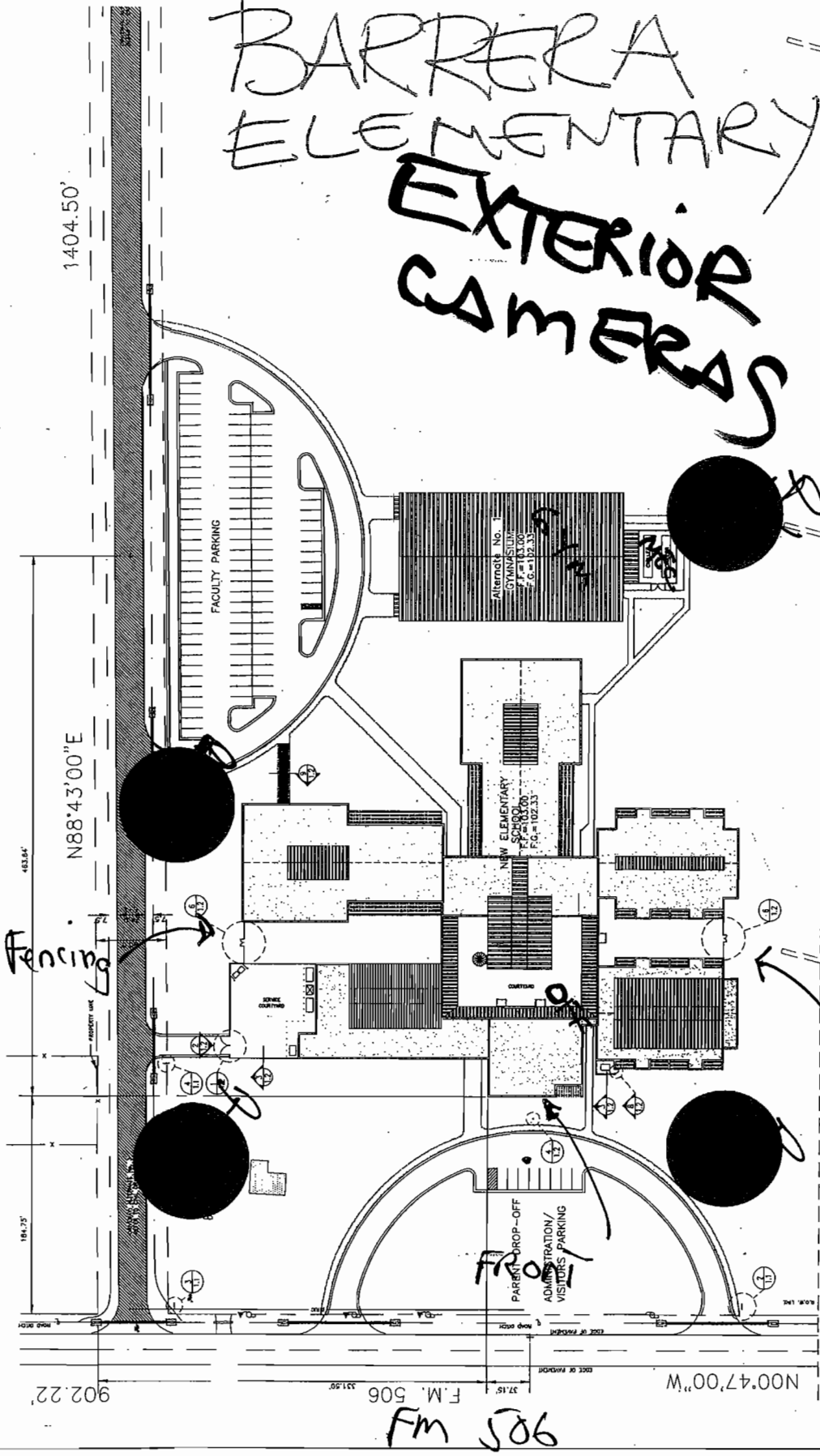
Drawings:

The following drawings are added as additional information. Keep in mind the drawings are not to scale. They are to be used only as a reference as to what the district is looking at. Measurements should be done by vendors.

Poles:

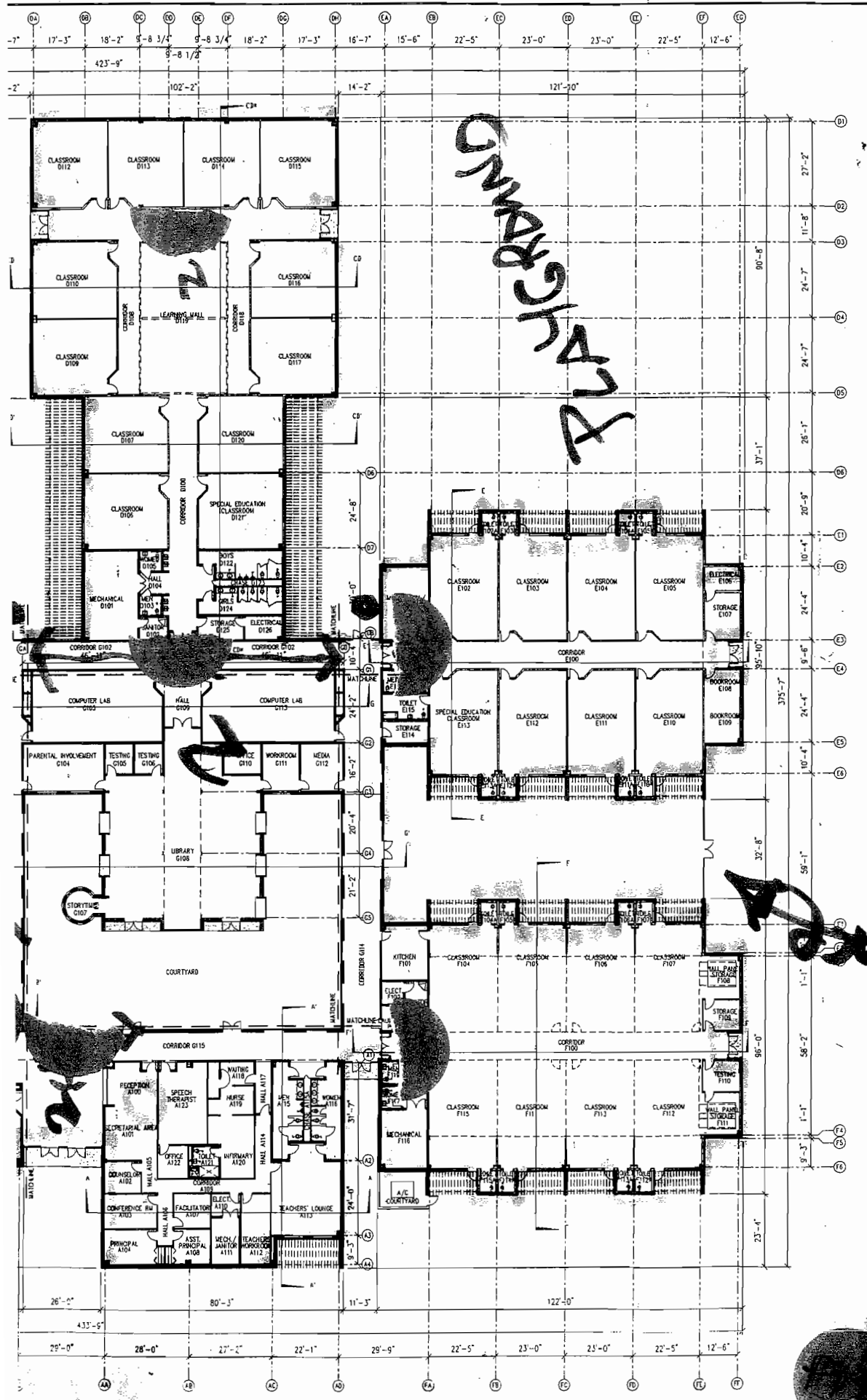
Square tubing 6" x 6" – ¼ " steel gauge – 20' to 25' filled with concrete

BARRERA ELEMENTARY EXTERIOR CAMERAS



1 SITE PLAN
SCALE: 1" = 50'-0"

F.M. 506
FM 506

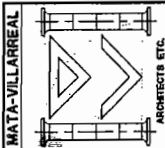


PROJECT # 8710
 DATE: 1/10/98
 DRAWN BY: LEA/ADAM
 CHECKED BY: H.R.G.
 REVISION:
 1:
 2:
 3:
 4:

SANTA ROSA NEW ELEMENTARY
 PROJECT:
 OWNER:
 SANTA ROSA, TEXAS
 SANTA ROSA I.S.D.

MATA VILLARREAL Architects Etc.
 Daniel Villarreal Assoc. A.A.
 Tower Plaza Suite 2 201 South 10th St. McAllen, Texas 78501 Tel.: (281) 631-8445 Fax: 631-8688

MATA VILLARREAL Architects Etc.
 Fernando Mata A.A.
 Tower Plaza Suite 2 201 South 10th St. McAllen, Texas 78501 Tel.: (281) 631-8445 Fax: 631-8688



4.1
 SHEET NAME: srelm-ovp
 DATE: 2/6/98 3:06 PM